

SAFE PEDESTRIAN CROSSING

@ GANESHKIND ROAD

Aditya Chawande
Architect Urban Designer
Project Associate, **Parisar**

Proposed by



Location Context- Ganeshkhind Road



Issues

- No safe pedestrian crossing in 1.30km stretch.
- Higher detour length



Unsafe Road Opening at Cosmos Bank



Pedestrian Crossing at Khairwadi Vasti



SPPU University Junction

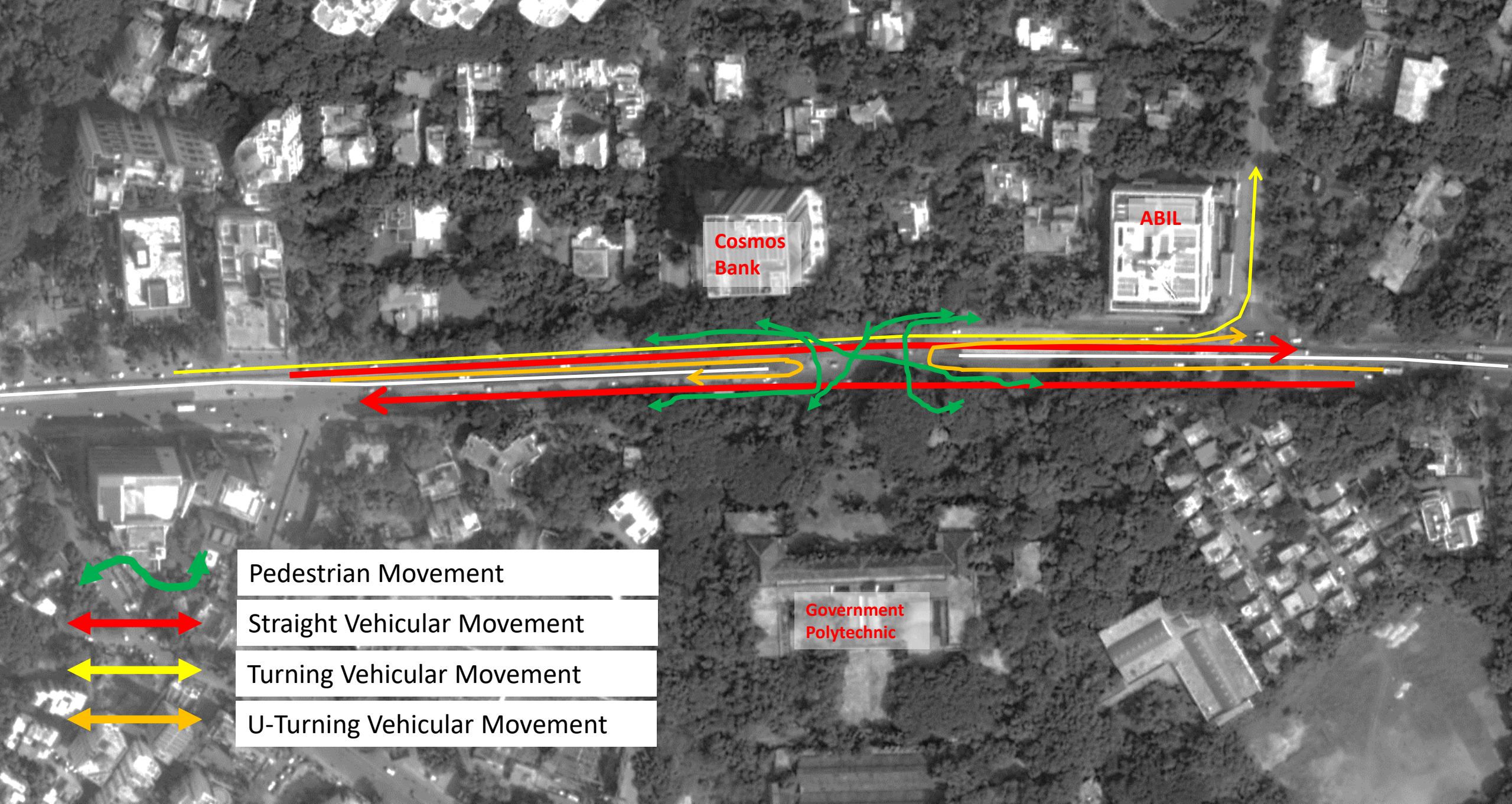
Ganeshkhind Road

1.30km

Ganeshkhind Rd

Pune Central Junction

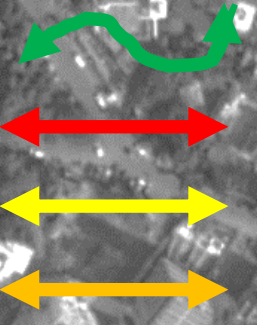
Traffic Movement Pattern at location



Cosmos Bank

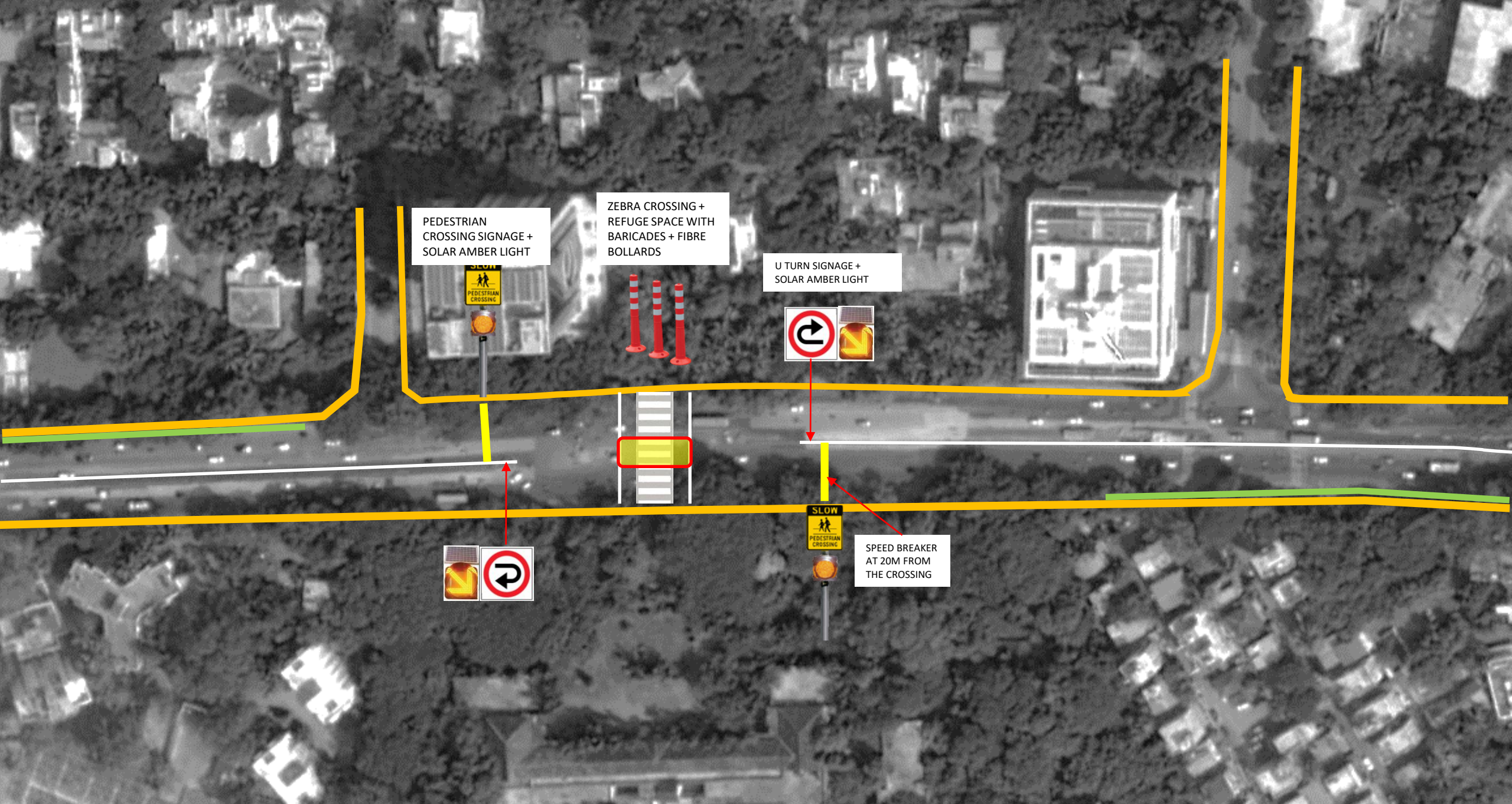
ABIL

Government Polytechnic



- Pedestrian Movement
- Straight Vehicular Movement
- Turning Vehicular Movement
- U-Turning Vehicular Movement

Tactical Intervention Strategy- @ Cosmos Bank, Ganeshkhind Road



PEDESTRIAN CROSSING SIGNAGE + SOLAR AMBER LIGHT



ZEBRA CROSSING + REFUGE SPACE WITH BARICADES + FIBRE BOLLARDS



U TURN SIGNAGE + SOLAR AMBER LIGHT



SPEED BREAKER AT 20M FROM THE CROSSING



Proposed Tactical Intervention- @ Cosmos Bank, Ganeshkhind Road

